



# SUGAM Prakriti



**Sugam Serenity LLP**  
**Registered Office:** Sukh Sagar, Unit 4B, 2/5 Sarat Bose Road, Kolkata 700020  
**Site:** Premises No. 1479, Kusumba, Kolkata 700103  
**P** 033 7164 5633, **W** [sugamhomes.com](http://sugamhomes.com)

**Disclaimer:** Specifications, amenities, information, images, visuals shown in this promotional document is/are indicative of the envisaged development and are subject to change. Images used are "Rendered Images" and are only indicative. The Developer reserves rights to make additions, deletions, alterations or amendments as and when it deems fit and proper. All intending Allottee/s are bound to inspect and appraise themselves of all relevant information prior to making any purchase decisions.

Nature has always been celebrated  
by poets of Bengal.  
Inspired by the rhythm of poetry,  
**Sugam Homes** pays tribute to the evergreen charm  
of nature through its unique project

**SUGAM**  
**Prakriti**

Nestled amidst acres of greenery, this property creates  
an oasis of green delight right in the midst of the city.  
Time to explore nature in all its glory,  
just as the poets did.



Artist's impression



শ্রীর ভবনারে কী হওয়ায় মাতালো,  
দ্রোলে মন দ্রোলে অকারণ হ্রস্বে।  
হৃদয়ে গগনে সজল ঘন নবীন মেঘে  
বসের ধারা বরষে।।  
অশ্বরে দেখি না যে দেখি না,  
শুধু মনে মনে ঋণে ঋণে ওই শোনা যায়  
বাজে অলখিত তারি চরণে  
কনুকনু কনুকনু নৃগুরধ্বনি।।

- রবীন্দ্রনাথ ঠাকুর





Artist's impression



A relaxed open contemporary living. Abundant greenery, open spaces and modern comfort create a green sanctuary for you to unwind.

**Sugam Prakriti** by Sugam Homes is the answer to those who are seeking peace. With 3 towers of 231 comfortable apartments and a distinctive landscaped premise, it's easy to fall in love with life here. Engulfed in greenery, crafted with modern living aesthetic and planned with versatility, Sugam Prakriti connects you to your inner self away from the maddening crowd.





আজি কমল মুকুলদল খুলিল, দুলিল রে দুলিল  
মানস সরসে রসপুলকে পলকে পলকে ঢেউ তুলিল।  
গগন মগন হল গন্ধে, সমীরণ মূর্ছে আনন্দে,  
গুনগুন গুঞ্জন ছন্দে মধুকর ছিরি ছিরি বন্দে -  
নিখিল ডুবন মন ডুলিল।  
মন ডুলিল রে মন ডুলিল।।

- রবীন্দ্রনাথ ঠাকুর





Artist's impression



## Location

For a change, here's green homes right in the city. Sugam Prakriti is surely the most coveted destination for those seeking proximity to a good life.

Located at Kamalgazi More, one of the most vantage locations in suburban Kolkata, the proximity to the best of social infrastructure comes only moments from your home. Be it the arterial EM Bypass, Kavi Nazrul Metro Station or Sonarpur Railway Station for commute or the Big Bazaar, Hindustan Health Point, BD Memorial International School, Swami Vivekananda and Future Institutes for advanced education, every facility is close at hand. Added to it, the overlooking lake view and lush green surroundings makes reclining in your favourite oasis an absolute joy.

- Sonarpur Railway Station ————— 3 kms | 10 mins
- Future Institute of Engineering & Management ————— 1.6 kms | 6 mins
- Garia Bus Stand ————— 4.5 kms | 13 mins
- Shahid Khudiram (Dhalai Bridge Metro Station) ————— 4.2 kms | 11 mins
- Kavi Subhas Metro Station ————— 5.6 kms | 15 mins
- Kamalgazi More ————— 1.8 kms | 7 mins
- Wood Square Mall ————— 2 kms | 8 mins
- Kavi Nazrul ————— 4.5 kms | 15 mins

Approximate data sourced from Google Map



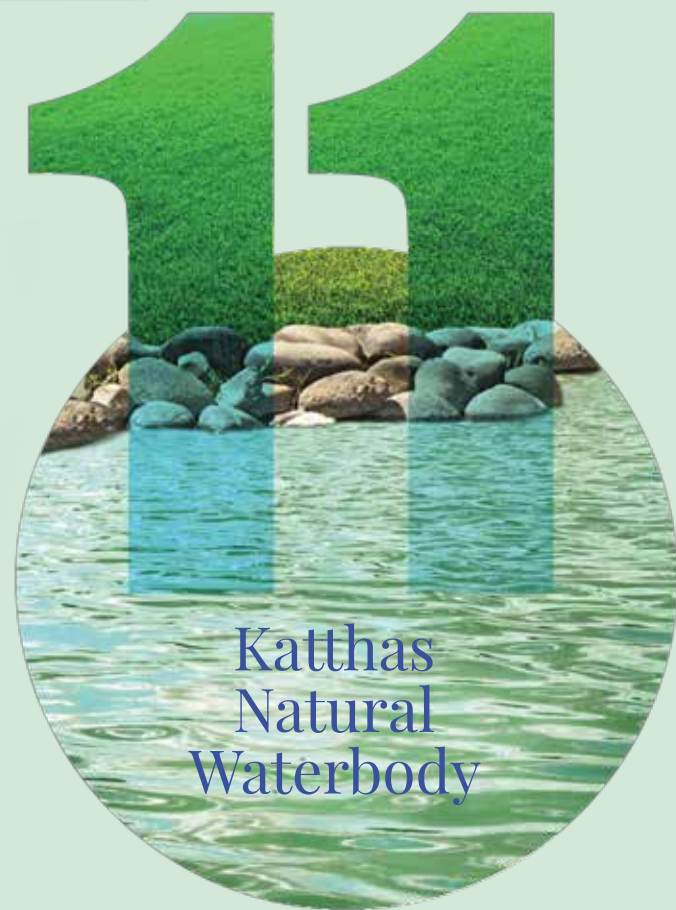


ভোর হ'ল রে, ফর্সা হ'ল, দু'ল'ল উষার ফুল-দোলা !  
আনন্বে আলায় যায় দেখা ওই পদ্মকলির হাই-তোলা !  
জগলো সাড়া নিদ' ম'লে, অ-থই নিথর পাথর-জলে  
আলপনা দ্রায় আন'তো বাতাস, ভোরাই সুরে মন ভোলা!  
ধানের ক্ষেতের সবুজে কে আজ জোহাগ দিয়ে ছুপিয়েছে !  
জই জোহাগের গুঁটু পরাগ টোপর-পানায় টুপিয়েছে !  
আলোর মাঠের বেগল ভরেছে, অপরাহিতার বং ধরেছে  
নীল-বগজলের বগজল-লতা আস'মানে চোখ ডুবিয়ে যে ।  
কল্পনা আজ চলছে উড়ে হালকা হাওয়ায় খেল' খেলে !

- সত্যেন্দ্রনাথ দত্ত

73%

Open Space



## Inherit a green future

Laying the foundation on green living, good life and values.

At Sugam Prakriti life is vibrant, colourful and enchanting. With 73% open space, here blooming beauties in every nook and corner will keep surprising you every day. An address that strikes a harmonious balance between responsibility towards environment and integration of modern thinking. A thoughtful walk of 200 mts away from the entrance, coupled with a 11 katthas natural pond with landscaped water promenade. From the décor to products to the core values, the inspiration of green runs in all the elements of 'Prakriti.'



Efficiently designed units for optimal utilisation of space

1 BHK (299 sq.ft.), 2 BHK (507 - 549 sq.ft.)  
3 BHK (643 - 645 sq.ft.) available

Maximum units get natural light in the day

2 side open apartments, Cross ventilation  
for reduced requirement of fans

Proposed IGBC Certified Green Building

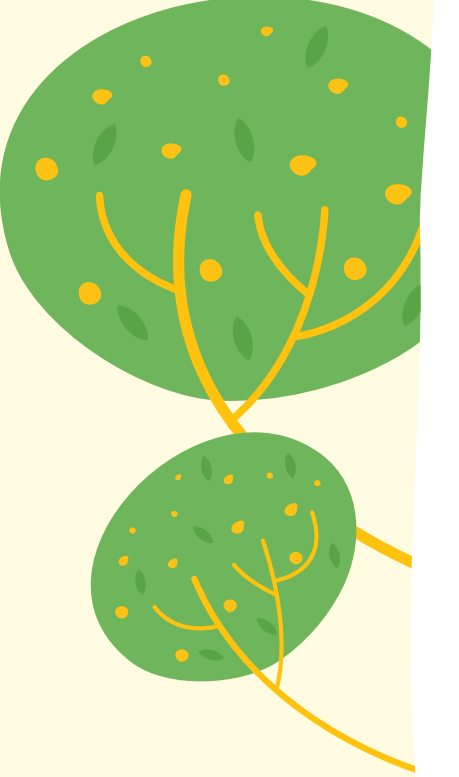


Artist's impression



বাংলার মুখ আমি দেখিয়াছি, তাই আমি পৃথিবীর রূপ  
খুঁজিতে যাই না আর অন্ধকারে ভেগে উঠে ডুমুরের গাছে  
চেয়ে দেখি ছাতর মতো বড় পাতাটির নিচে বসে আছে  
ভোরের দ্রোণল পাখি - চারিদিকে চেয়ে দেখি পল্লবের স্তূপ  
জাম-বট-কাঁঠালের-হিজলের-অশ্বখের করে আছে চুপ  
ফণীমনসার ব্রোণে শটিবনে তাহাদের ছায়া পড়িয়াছে  
মধুকর ডিঙা থেকে না জানি সে করে চাঁদ চম্পার কাছ  
এমনই হিজল-বট-তমালের নীল ছায়া বাংলার অপকৃপ রূপ...

- জীবনানন্দ দাশ





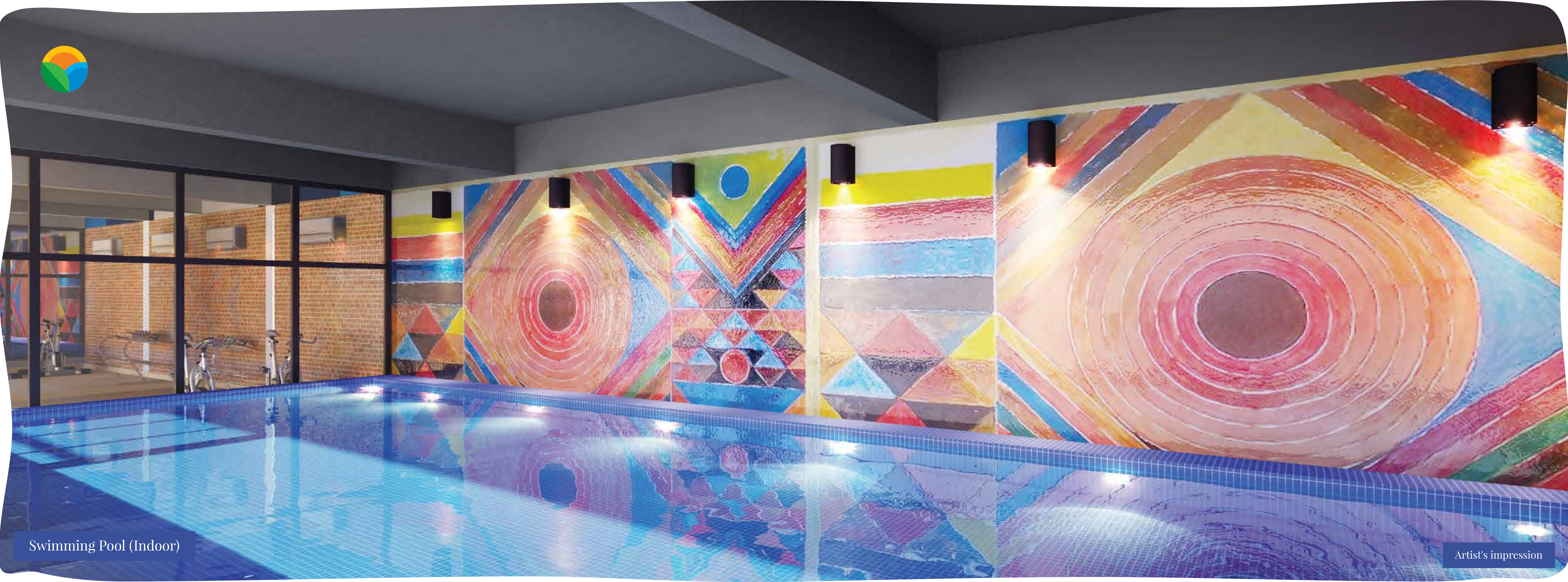
## Return to paradise

A true harmony of style and function.

Luxurious green homes with modernity and manicured landscapes give this address a cool, contemporary edge. Inspired by the great outdoor lifestyle, you can relax resort-style or keep fit in the exclusive fully-equipped gymnasium. For a more tranquil moment, wander at your leisure through the trees and exotic plants down the pathway. The fusion of leafy outdoor oasis and sophisticated design create a new modern era in luxury living.

### Amenities:

- Games Room (Indoor)
- Library & TV Lounge
- Childrens' Play Area (Outdoor)
- Club
- Banquet Hall & Lawn
- Swimming Pool (Indoor)
- Gym
- Retail Place
- Natural Pond
- Waterside Boulevard
- Central Lawn
- Senior Citizen Corner
- Gazebo
- Entry Porch



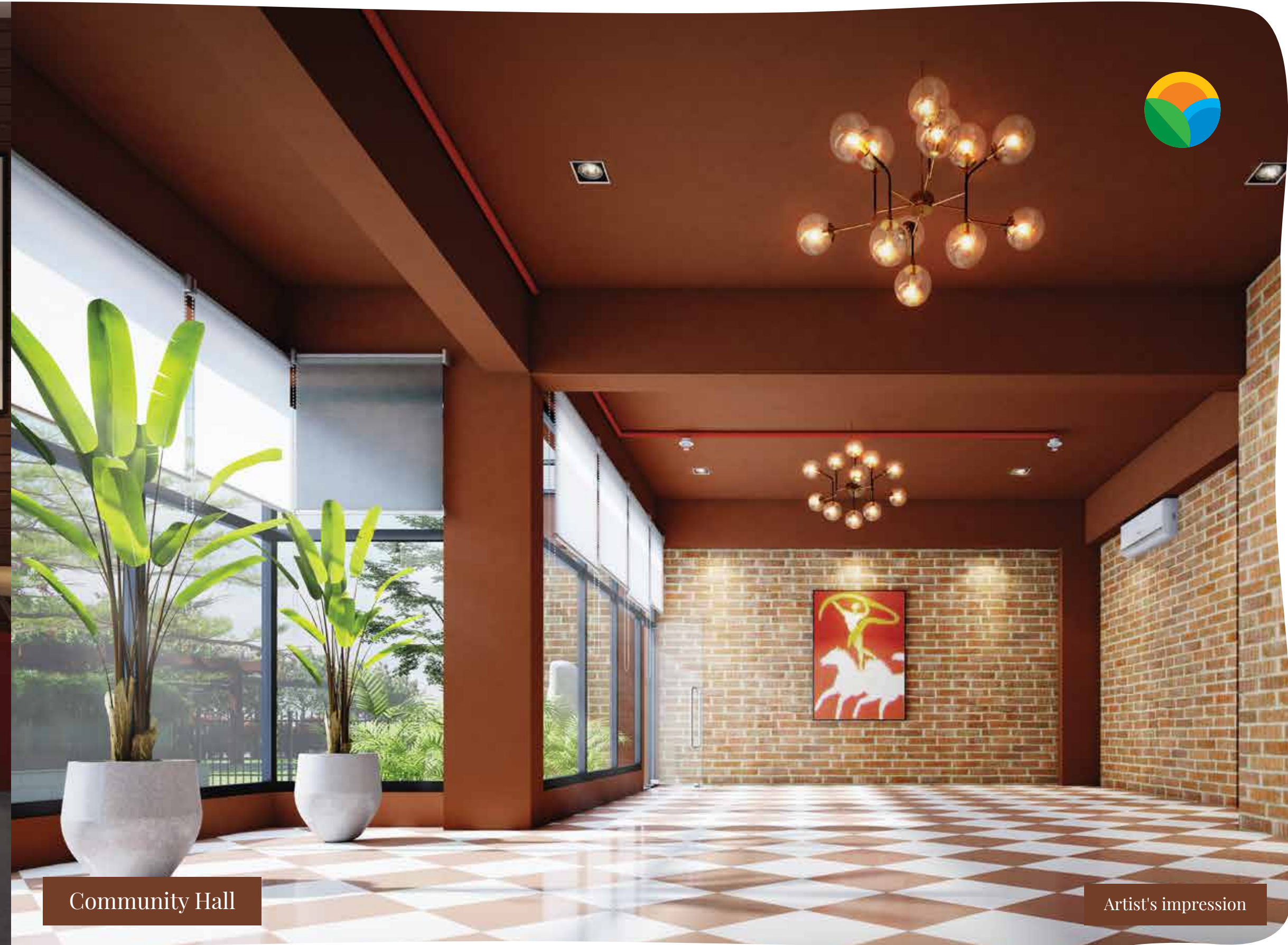
Swimming Pool (Indoor)

Artist's impression



Library

Artist's impression



Community Hall

Artist's impression





বহু দিন ধ'রে বহু ফ্রেশ দুয়ে  
বহু ব্যয় করি বহু দেশ ঘুরে  
দেখিতে গিয়েছি পর্বতমালা,  
দেখিতে গিয়েছি সিন্ধু।  
দেখা হয় নাই চক্ষু মেলিয়া  
ঘর হতে শুধু দুই পা ফেলিয়া  
প্রকটি ধানের শিষের উপরে  
প্রকটি শিশিরবিন্দু।

– রবীন্দ্রনাথ ঠাকুর



## Home for memories

Only good life meets you here. Cocooned from the city rush, this luxurious 2 BHKs and 3 BHKs are fully equipped to pamper and de-stress you.

In this naturally beautiful setting, Sugam Prakriti has added the finishing touches of detailed amenities so that you can enjoy to the fullest. Sprawling bedrooms, wide balconies, chic kitchens and fashionable bathrooms all wrapped in privacy and dotted with green. A collection of thoughtful amenities, complemented by recreational activities and outdoor comfort. The best of times await you.

- Wardrobe space with every bedroom
- Windows upto 8 ft height in bedrooms
- 2 bathrooms getting hot water from single water heater, reduced electricity requirement
- No Wastage of Space inside the unit
- Well ventilated corridors
- Security Features CCTV, Intercom, 24 Hours Security Team





হয়ত তোমার গাৰ দেখা,  
যেখানে তুই নত আকাশ চুমছে বনের সবুজ রেখা।।  
তুই সুদূরের গাঁয়ের মাঠে,  
আলের পাথে বিজন ঘাটে  
হয়ত তুই মুচকি হেজে  
ধরবে আমার হাতটি তুকা।।  
তুই নীলের তুই গহন-পারে ছোমটা-শরা তোমার চাওয়া,  
আনলে খবর গোপন দুই দিকপারের তুই দখিনা হওয়া।।

বনের ফাঁকে দুষ্কু তুমি  
আজ-যাবে নয়না চুমি'  
জেই জে কথা লিখছে হেতা  
দিখলয়ের অরণ-লেখা।

- কাজী নজরুল ইসলাম



# Finer joys of life

## SPECIFICATIONS, AMENITIES, FACILITIES (WHICH ARE PART OF THE APARTMENT)

- **Super Structure:** Made of robust RCC Frames Structure
- **Walls:** Coated with Plaster of Paris/Putty/Gypsum finish on wall surface
- **Flooring:** Fitted with Vitrified tiles in the bed rooms, living/dining room.
- **Kitchen:** Granite counter top with one stainless steel sink. Fitted with tiles up to 2 feet above the kitchen counter.  
Flooring: Anti-Skid ceramic/vitrified tiles matched up with the interiors along with an exhaust Point.
- **Toilet:** Flooring : Antiskid Ceramic Tiles with glazed tiles up to door height in the shower area and the remaining areas. Washrooms are fitted with exhaust points.
- **Doors:** Main Door & Bedroom Doors- Enamel painted flush door with wooden door frames. Toilet doors fitted with PVC/wooden door frames
- **Windows:** Aluminum windows with MS grills (at extra cost) and clear glass Glazing
- **Sanitary ware:** Chromium plated fittings with white glazed sanitaryware
- **Electricals:** Concealed copper wiring; Cable TV points in the living room. Power point in the Kitchen area. Provision for AC in the Master Bedroom & 1 other bedroom for 2/3 bedroom flats, Geyser point in master toilet, Exhaust point in the kitchen. Every flat is fitted with modular switches of reputed make.
- **Generator:** Provision for standby supply power in each Flat (at extra cost.) (400 Watts for 1 BHK, 500 Watts for 2 BHK, 600 watts for 3 BHK)

## SPECIFICATIONS, AMENITIES, FACILITIES (WHICH ARE PART OF THE PROJECT)

### COMMON PARTS & PORTIONS

#### PART – I (Common for the building)

- Stair Case and stair cover
- Lift and Lift Machine Room
- Lift well, Lift Lobbies
- Overhead Reservoir
- Water Connection
- Common Roof
- Common passage of the building and its entrance (except the parking areas as designated by the Promoter)

#### PART –II (Common for the entire Complex)

- Jogging Track
- Children's play area
- Landscaped garden
- Generator
- CCTV system/24 hours security
- Transformer
- WBS&DCL Meter room

#### Specifications of the Project:

- Super Structure: RCC Frames Structure with pile foundation.
- Wall: Exterior-Weather Proof Paint with Decorative/Texture Finish

#### PART –II (Common for the entire Complex)

- Underground water reservoir
- Drains, sewers, pipelines
- Driveways and pathways
- Common Toilets on the ground floor
- Boundary walls and main gates
- Fire fighting system

#### PART III Recreation Centre Facilities owned by the Owners and the Promoter

- Air conditioned Community Hall
- Library
- Indoor games room with Table Tennis
- Gymnasium
- Swimming Pool



Artist's impression



### Pioneers in affordable housing

For over 30 years, the Sugam Group has been creating homes within budgets, integrating sheer imagination with the foresight to build landmarks. Having won more than 30 National Awards, it's no wonder that the Group has earned the title of Pioneers of Affordable Housing in Eastern India.

With over three decades of presence in the real estate development sector, Sugam has completed 25+ projects, covering 3 million sq.ft. of space with 7,000+ trusted residents.

#### Some of its most popular projects include

**Residential:** Sugam Sudhir (Kamalgazi) • Sugam Serenity (Kamalgazi) • Morya (New Alipore) • Sugam Paragon (Muzaffar Ahmed Street)

**Commercial:** Sugam Business Park (Sector V) • Fort Terrazzo (Gariahat)



Sugam Park (Narendrapur)



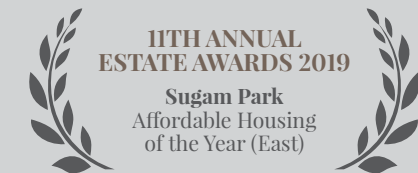
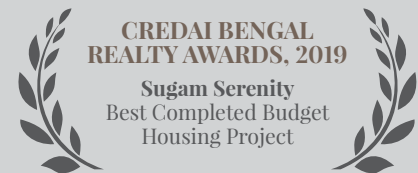
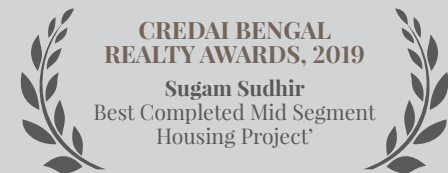
Sugam Sabuj (Narendrapur)



Sugam Park (Asansol)



Sugam Habitat (Off EM Bypass)



### PRINCIPAL ARCHITECT

#### Sougata Mitra

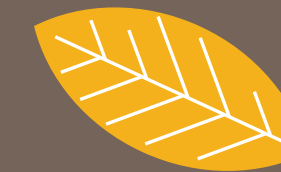
City's renowned architect Sougata Mitra and his firm Shelter has brought in professional prowess and brilliant ideation thus making Sugam Prakriti an exceptional success through a combination of dedicated design excellence, efficient delivery and sophistication.

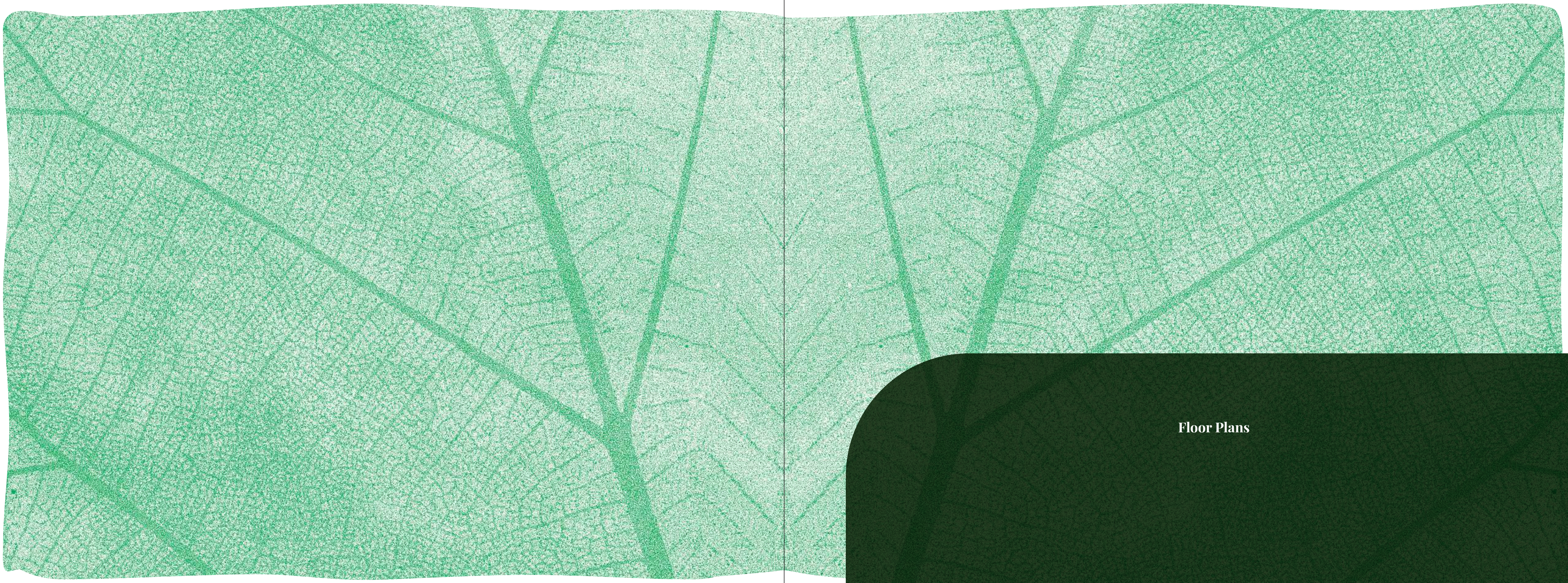
### INTERIOR & LANDSCAPE ARCHITECT

#### Square Consultants

Executive Design Studio

Square Design Studio founded by Ar. Ranit Maiti and Ar. Subhrajit G. Mitra, has been a renowned player in the architectural and design space for more than 20 years and has numerous awards and accolades to its credit.





**Floor Plans**